

# Geography constraints are not part of our service and support network

LOGIQ C products are backed by GE's strong service support. The dedicated team of service engineers spread across the regions ensures that you get more than just a product. GE is the world leader in Ultrasound with customers confidently recommending our products. With GE you have the confidence of service and support you need, when you need it. That's why you'll receive:

- In-depth, on-site applications training
- Assistance by one of the best-trained and most widely deployed ultrasound service teams in the industry
- There are frequent training programs that give field engineers the professional development and productivity skills they need to better service your systems
- Proactive monitoring, real-time support and Training all available through InSite II™



© 2008 General Electric Company - All rights reserved.  
GE Healthcare, a division of General Electric Company.

General Electric Company reserves the right to make changes in specifications and features shown herein, or discontinue the product described at any time without notice or obligation.  
Contact your GE representative for the most current information.

GE, GE Monogram, LOGIQ are trademarks of General Electric Company.

**Healthcare Re-imagined**  
GE is dedicated to helping you transform healthcare by driving critical breakthroughs in biology and technology. Our expertise in medical imaging and information technologies, medical diagnostics, patient monitoring systems, drug discovery, and biopharmaceutical manufacturing technologies is enabling healthcare professionals around the world to discover new ways to predict, diagnose and treat disease earlier. We call this model of care "Early Health." The goal: to help clinicians detect disease earlier, access more information and intervene earlier with more targeted treatments, so they can help their patients live their lives to the fullest. Re-think, Re-discover, Re-invent, Re-imagine.

GE Healthcare  
9900, Innovation Drive,  
Wauwatosa, WI 53226  
U.S.A

[www.gehealthcare.com](http://www.gehealthcare.com)



**Europe**  
GE Ultraschall  
Deutschland GmbH &  
Co. KG  
Beethovenstr. 239  
D - 42655 Solingen  
T (+49) 212 2802 0  
F (+49) 212 2802 28

**Asia**  
GE Healthcare  
Clinical Systems Asia  
3/F, GE China  
Technology Park,  
1 Hua Tuo Road,  
Shanghai 201203,  
China  
T 86 21 3876 4136  
F 86 21 3877 7498

GE Healthcare

# Diagnosis with details LOGIQ C3

my first LOGIQ





# Advanced Technology for better care

Being a healthcare provider today is more challenging than ever before. Greater demands are being placed on your skills and time. But being a caring professional, you strongly believe that any compromise on the quality of patient care is not an option.

The LOGIQ C3 is a highly capable black and white ultrasound system that allows you to do more in less time, while maintaining your budget needs.

## Performance powered by GE's Leadership

GE's TruScan Architecture is the result of years of research and innovation in ultrasound technology. The LOGIQ C3, designed with an in-depth understanding of clinical practice needs, delivers high performance by virtue of:

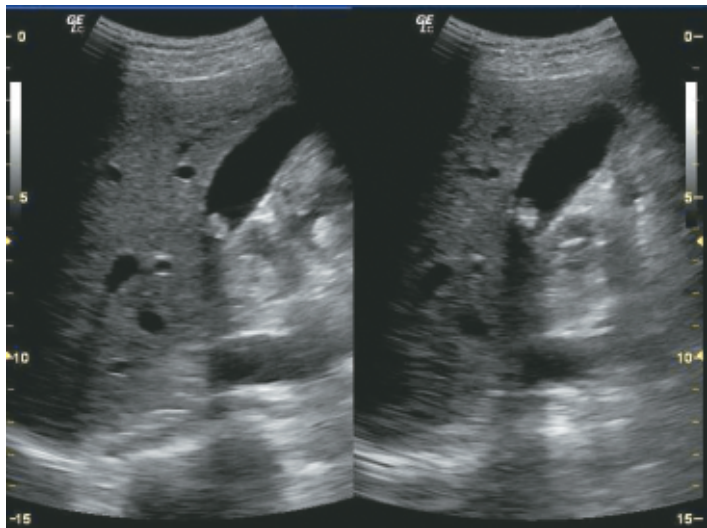
- SmartScan for superior diagnostic consistency and confidence through improved image acquisition, reducing the time needed with each patient
- TruAccess that enables live scanning techniques to be applied to stored image data, an exclusive GE raw data processing technology that enhances diagnostic capability
- ComfortScan that aids ease-of-use and operator comfort due to ergonomic design



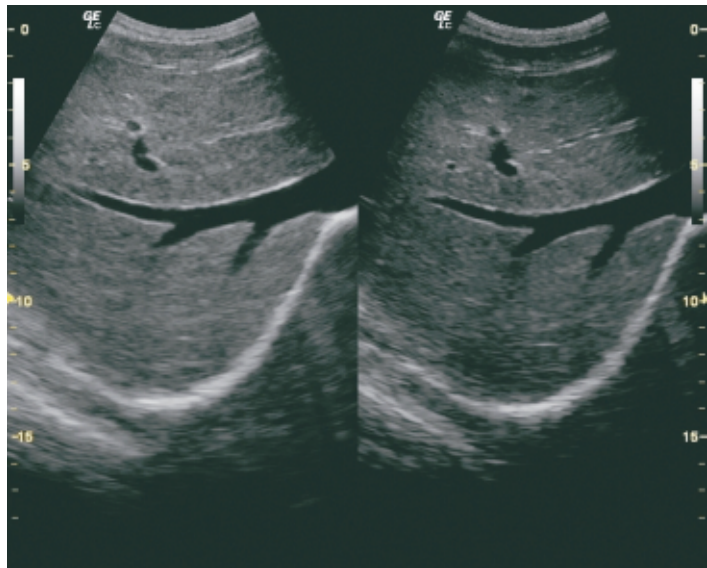
# Diagnostic capability that makes a positive difference

The LOGIQ C3 has been conceived as a package that aids your practice through greater dependability in diagnosis even as it enhances patient throughput. The system is equipped with a host of features for optimized performance:

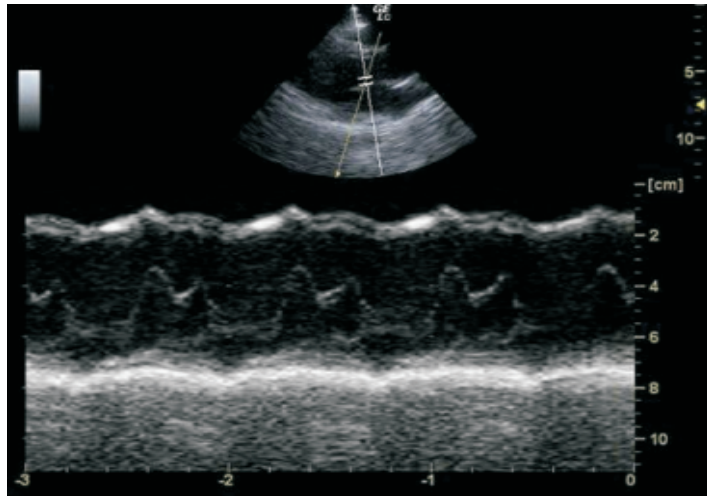
- Auto Optimization - one touch image optimization, improves contrast resolution
- Tissue Harmonic Imaging (THI) - visualize in great detail with THI. It is the combination of fundamental wave & harmonic wave which provides increased spatial and contrast resolution
- Virtual Convex - Wider field of view on linear probes



Gallstone imaging with 4C-RC using Auto Tissue Optimization



Liver imaging using 4C-RC probe - Comparing Fundamental & Harmonic imaging



Anatomical M-Mode : independent from transducer orientation, the M-Mode line can be adjusted for accurate measurements on a live or frozen image

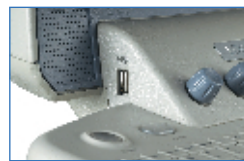
The already powerful performance of the LOGIQ C3 can be further supplemented with optional add-on features such as:

- LogiqView - Extended field of view to image large organs, usually not seen in a single image
- Easy 3D - See greater relational detail of the anatomy position with the free-hand 3D mode
- Anatomical M-Mode - Free M cursor, allows angle adjustment for accurate measurement on both frozen and live image
- DICOM - enables easy connectivity with workstations and improved management of imaging data
- PWD - Pulse Wave Doppler

# Comfortably Small And Smart

With space often being a constraint in clinical practices, the LOGIQ C3 has been designed to fit in perfectly with its small footprint and light weight. You can, however, be sure that its big on productivity due to:

- Ergonomic hard key operations with backlit keys
- Wide-view 15" High resolution LCD with tilt and fold capability for easy viewing & safe system movement
- User programmable presets for quicker system setup
- User defined keys for greater operating convenience
- Quick saving of image data to memory stick for storage and archiving



*The Logiq "C" series of Ultrasound systems are the results of GE's deep understanding of the needs of patients and healthcare providers. The "C" represents the Care that you display for patients and the Consistency you can expect in diagnostic support. Both delivered in full!*

