

© 2008 General Electric Company - All rights reserved.
GE Healthcare, a division of General Electric Company.

General Electric Company reserves the right to make changes in specifications and features shown herein, or discontinue the product described at any time without notice or obligation.
Contact your GE representative for the most current information.

GE, GE Monogram, LOGIQ are trademarks of General Electric Company.

Healthcare Re-imagined

GE is dedicated to helping you transform healthcare by driving critical breakthroughs in biology and technology. Our expertise in medical imaging and information technologies, medical diagnostics, patient monitoring systems, drug discovery, and biopharmaceutical manufacturing technologies is enabling healthcare professionals around the world to discover new ways to predict, diagnose and treat disease earlier. We call this model of care "Early Health." The goal: to help clinicians detect disease earlier, access more information and intervene earlier with more targeted treatments, so they can help their patients live their lives to the fullest. Re-think, Re-discover, Re-invent, Re-imagine.

GE Healthcare
9900, Innovation Drive,
Wauwatosa, WI 53226
U.S.A

www.gehealthcare.com



Europe

GE Ultraschall
Deutschland GmbH &
Co. KG
Beethovenstr. 239
D - 42655 Solingen
T (+49) 212 2802 0
F (+49) 212 2802 28

Asia

GE Healthcare
Clinical Systems Asia
3/F, GE China
Technology Park,
1 Hua Tuo Road,
Shanghai 201203,
China
T 86 21 3876 4136
F 86 21 3877 7498

GE Healthcare

Greater Insights with LOGIQ C5

my first LOGIQ
my first Color



Clearer images Confident diagnosis

Accurate diagnosis is a key component of healthcare, and as a professional you fully understand how much of a difference it can make. You would undoubtedly wish to maintain diagnostic confidence despite higher patient volume and growing complexity of cases.

The LOGIQ C5, an advanced color doppler ultrasound system from GE Healthcare places the power to do so, in your hands. Bringing superior diagnostic capability into your practice without the need for large investments.



Technology the world trusts -TruScan

The LOGIQ C5 is a product that draws on GE's leading position in ultrasound and features its unique TruScan Architecture. With proven performance internationally, TruScan combines the benefits of:

- SmartScan for superior diagnostic consistency and confidence through improved image acquisition, reducing the time needed with each patient
- TruAccess that enables live scanning techniques to be applied to stored image data, an exclusive GE raw data processing technology that enhances diagnostic capability
- ComfortScan that aids ease-of-use and operator comfort due to ergonomic design.

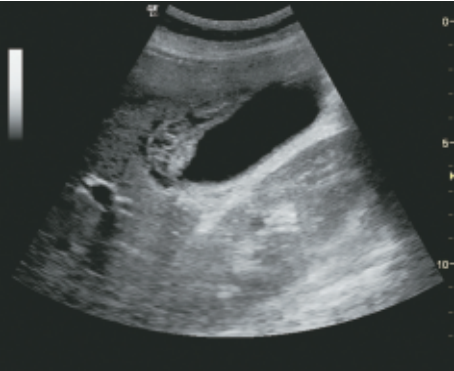
TruScan architecture provides flexibility and versatility to the LOGIQ C5, making it your first choice. LOGIQ C5 supports a wide range of ergonomically designed, convex, micro-convex, linear and phased array sector probes.



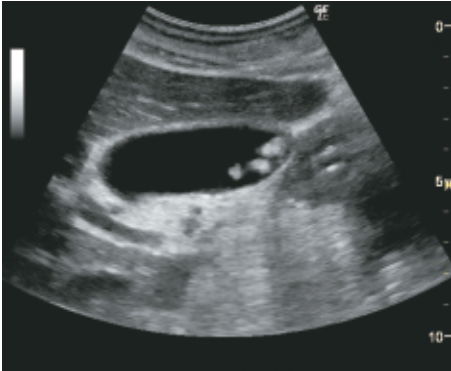
To “C” is to believe

The LOGIQ C5 has been designed with clinical practices in mind. The advanced features and tools built into the LOGIQ C5 enable informed decision making. Quick and confident diagnosis is aided by:

Tissue Harmonic Imaging (THI) - visualize details with THI. It is the combination of fundamental wave & harmonic wave which provides increased spatial and contrast resolution

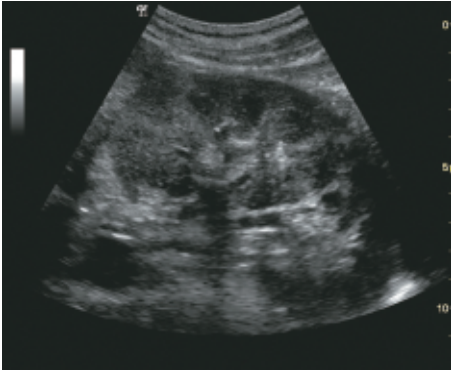


Inflammatory tissue around GB wall see with 4C-RC probe using Tissue Harmonic Imaging



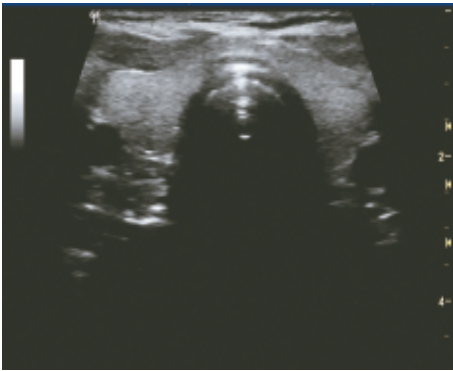
Gall bladder rolling stones - 4C-RC in Tissue Harmonic Imaging

Auto Optimization - One-touch optimization (2D/Color/Doppler), improves contrast resolution



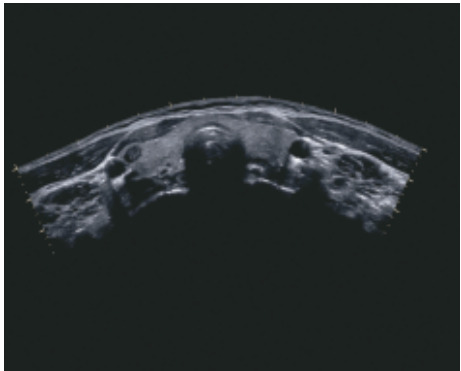
B mode image using harmonics & auto optimization shows uniform detail and contrast resolution of the longitudinal left kidney

Virtual Convex - Wider field of view on linear probes



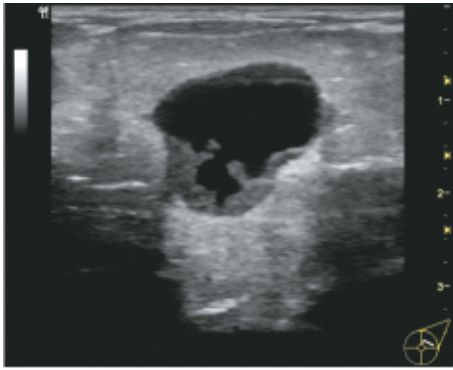
Right and Left lobe of Thyroid seen together using Virtual convex

LogiqView* - Extended field of view to image large organs



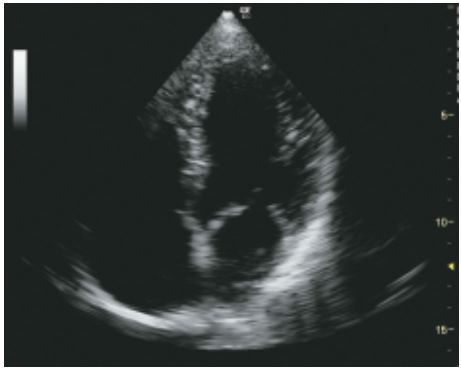
Thyroid and nodule seen in one single image using LogiqView

High frequency linear probe for small parts imaging



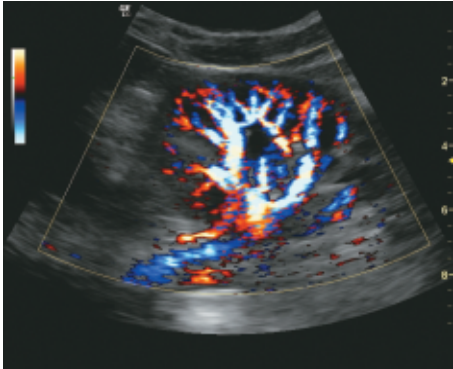
Breast cyst with sediment seen using high frequency Linear probe in Tissue Harmonic Imaging

3S-RC* phased array sector probe for adult cardiac application



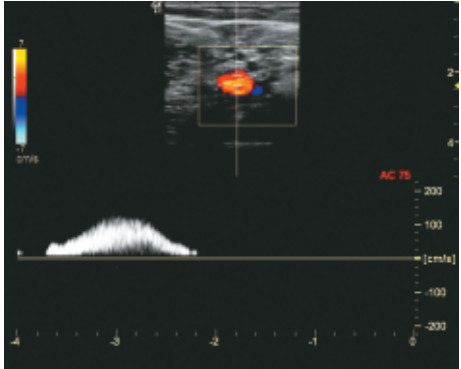
Apical view of adult heart showing the opening of Mitral valve

Directional power doppler



Renal flow directional information seen on Directional power doppler imaging

Pulse wave doppler imaging



Saphenous vein doppler

*Optional



Do more day in and day out

The LOGIQ C5 delivers productivity that matches its performance. The thoughtfully designed system enables higher patient throughput due to:

- Small footprint and light weight for easy movement
- Wide-view 15" High resolution LCD with tilt and fold capability for easy viewing & safe system movement
- Ergonomic hard key operations with backlit keys
- User programmable presets for quicker system setup
- User defined keys for greater operating convenience
- Quick saving of image data to memory stick for storage and archiving
- DICOM enables easy connectivity with workstations and improved management of imaging data

The Logiq "C" series of Ultrasound systems are the results of GE's deep understanding of the needs of patients and healthcare providers. The "C" represents the Care that you display for patients and the Consistency you can expect in diagnostic support. Both delivered in full!



Service support without compromise

LOGIQ C products are backed by GE's strong service support. A dedicated team of service engineers, spread across regions, ensures that you get more than just a product. GE is the world leader in Ultrasound with customers confidently recommending our products. With GE you have the confidence of the service and support you need, when you need it. That's why you'll receive:

- In-depth, on-site applications training
- Assistance by one of the best-trained and most widely deployed ultrasound service teams in the industry
- Better service for your system due to the frequent training programs that give our field engineers the professional development and productivity skills they need
- Proactive monitoring, real-time support and training through InSite II™

